

Daikin Altherma 3 R W

Wall mounted unit

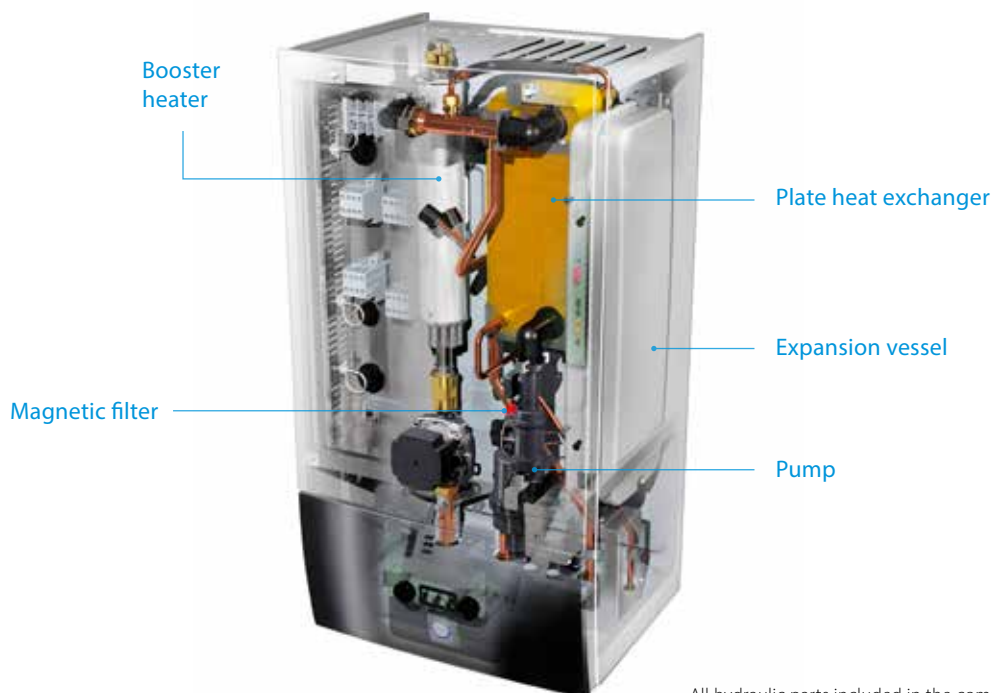


Why choose Daikin wall mounted unit?

The Daikin Altherma 3 R W wall mounted unit offers **heating and cooling** with high flexibility for a quick and easy installation, **with an optional connection to deliver domestic hot water**.

High flexibility for installation and domestic hot water connection

- › Inclusion of all hydraulic components means no third party components are required
- › PCB board and hydraulic components are located in the front for easy access
- › Compact dimensions allows for small installation space, as almost no side clearances are required
- › The unit's sleek design blends in with other household appliances
- › Combine with a stainless steel or ECH₂O thermal store



All hydraulic parts included in the compact wall mounted unit.

Flexibility in providing domestic hot water

If the end user only requires hot water and installation height is limited, a separate tank can provide the required installation flexibility. At the side of our standard stainless steel tanks, we propose the ECH₂O thermal stores.

ECH₂O thermal store range: additional hot water comfort

Combine your wall mounted unit with a thermal store for additional hot water comfort.

- › Fresh water principle: receive domestic hot water on demand while eliminating the risk of contamination and sedimentation
- › Optimal domestic hot water performance: with high tapping performance
- › Fit for future possibility to integrate with renewable solar energy and other heat sources, e.g. fireplace
- › Lightweight and robust build on the unit combined with cascade principle offers flexible installation options



Example of installation with a stainless steel domestic hot water tank (EKHWS-D).

Daikin Altherma 3 R W

Wall mounted **heating only** air-to-water heat pump ideal for low energy houses

- › Inclusion of all hydraulic components means no third party components are required
- › PCB board and hydraulic components are located in the front for easy access
- › Compact dimensions allows for small installation space, as almost no side clearances are required
- › The unit's sleek design blends in with other household appliances
- › Combine with a stainless steel tank or ECH₂O thermal store
- › Outdoor unit extracts heat from the outdoor air, even at -25 °C
- › Compatible with the Onecta app
- › Voice control available



011-1W0218-219
011-1W0221
011-1W0246-247



Efficiency data				EHBH + ERGA	04E6V + 04EV	08E6V + 06EVH	08E9W + 06EVH	08E6V + 08EVH	08E9W + 08EVH
Heating capacity	Nom.			kW	4.30 (1) / 4.60 (2)	6.00 (1) / 5.90 (2)		7.50 (1) / 7.80 (2)	
Power input	Heating	Nom.		kW	0.85 (1) / 1.26 (2)	1.24 (1) / 1.69 (2)		1.63 (1) / 2.23 (2)	
COP					5.10 (1) / 3.65 (2)	4.85 (1) / 3.50 (2)		4.60 (1) / 3.50 (2)	
Space heating	Average climate water outlet 55 °C	General	SCOP		3.26		3.32		
			η _s (Seasonal space heating efficiency)	%	127		130		
	Average climate water outlet 35 °C	General	Seasonal space heating eff. class		A++				
			SCOP		4.48	4.47		4.56	
			η _s (Seasonal space heating efficiency)	%	176		179		
			Seasonal space heating eff. class		A+++				
Indoor Unit				EHBH	04E6V	08E6V	08E9W	08E6V	08E9W
Casing	Colour			White + Black					
	Material			Resin, sheet metal					
Dimensions	Unit	Height x Width x Depth		mm					
Weight	Unit			kg					
	Heating	Water side	Min.~Max.	°C					
Operation range	Domestic hot water	Water side	Min.~Max.	°C					
	Sound power level	Nom.		dBA					
Sound pressure level	Nom.			dBA					
Outdoor Unit				ERGA	04EV	06EVH	08EVH		
Dimensions	Unit	Height x Width x Depth		mm					
Weight	Unit			kg					
	Compressor	Quantity			1				
	Type			Hermetically sealed swing compressor					
Operation range	Cooling	Min.~Max.		°CDB					
	Domestic hot water	Min.~Max.		°CDB					
Refrigerant	Type			R-32					
	GWP			675.0					
	Charge			kg					
	Charge			TCO _{Eq}					
	Control			Expansion valve					
Sound power level	Heating	Nom.		58		60		62	
	Cooling	Nom.		61				62	
Sound pressure level	Heating	Nom.		44		47		49	
	Cooling	Nom.		48		49		50	
Power supply	Name/Phase/Frequency/Voltage				Hz/V				
Current	Recommended fuses				A				

(1) Cooling Ta 35 °C - LWE 18 °C (DT = 5 °C); heating Ta DB/WB 7 °C/6 °C - LWC 35 °C (DT = 5 °C) (2) Cooling Ta 35 °C - LWE 7 °C (DT = 5 °C); heating Ta DB/WB 7 °C/6 °C - LWC 45 °C (DT = 5 °C). This product contains fluorinated greenhouse gases.